

10 YEAR  
LIMITED  
WARRANTY

NATURAL GAS  
& PROPANE

# COZY

## COZY TOP VENT GRAVITY HEATER

Cozy Top Vent Gravity Heater models feature energy and money-saving operating costs. Easily recessed or surface-mounted options are great in homes, schools, cabins, apartments, offices and shops.

Heating rooms individually allows comfort in areas being used while saving fuel costs in unused areas.

For additional money-saving efficiency, install one of our optional blowers.

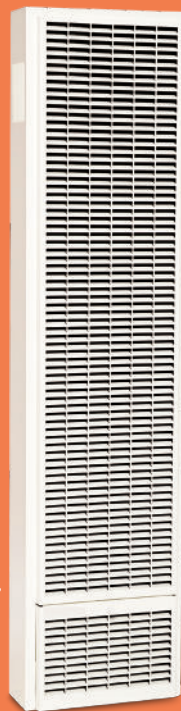
### FEATURES

- No electricity required
- "Matchless" pilot igniter
- Easy installation
- Patented side-relief opening draft hood design reduces flue gas temperature to minimize normal heat loss
- Natural or propane models (conversion kits available)
- Automatic temperature and safety controls
- Resettable vent-limit safety switch

Cozys' dual-wall model, with patented energy-maximizing side-relief draft hood openings, will heat two or more rooms quickly and economically. Conveniently installs in the wall to heat two adjacent rooms (25,000 BTU/hr. on each side).



DUAL-WALL TOP-VENT  
50,000 BTU/hr.



25,000 - 35,000  
BTU/hr.



Cozy Heating Systems

[www.cozyheaters.com](http://www.cozyheaters.com)

1-888-444-1212



AHRI CERTIFIED™

HARDI

Made in the USA

# COZY TOP VENT GRAVITY HEATER



MODEL NUMBER		BTU/hr. INPUT	BTU/hr. OUTPUT	EFFICIENCY PERCENT		DIMENSIONS (INCHES)			THERMOSTAT	SHIPPING WEIGHT (LBS.)
NATURAL	PROPANE			THERMAL	AFUE	WIDTH	DEPTH	HEIGHT		
<b>SINGLE-SIDED FURNACES</b>										
<b>CONVERSION KITS AVAILABLE</b>										
C255H	C256H	25,000	17,870	72	70	16	6	65 3/4	MILLIVOLT	83
C355H	C356H	35,000	23,700	68	66	16	6	65 3/4	MILLIVOLT	83
<b>DOUBLE-SIDED FURNACES</b>										
<b>CONVERSION KITS AVAILABLE</b>										
C505H	C506H	50,000	36,900	74	70	16	6 each side	65 3/4	MILLIVOLT	137

Elevation rating from sea level to 2,000' - Consult Owner's Manual for installation of product at elevations over 2000' - 1/2" Gas Connection

## FEATURES

### "MATCHLESS" PILOT IGNITER

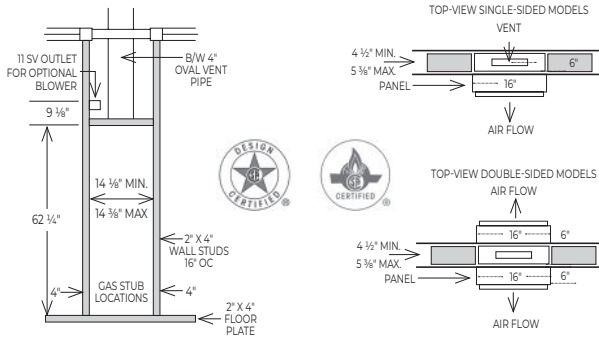
All models include a "matchless" pilot igniter that assures convenient pilot lighting without matches.

### CONTEMPORARY FINISH

Soft-white, powder-coat, heat-resistant finish to compliment any decor.

### INTERIOR FURNACE CLEARANCES

- 1" from an intersecting wall.
- 16" from the top of the appliance to the ceiling or other obstructions.
- 48" from the furnace front to draperies, furniture or other obstructions, or other combustibles.
- 2 1/2" from finished floor.



## IMPORTANT

**ANY WARRANTY CONSIDERATIONS ARE CONTINGENT ON INSTALLATION BY A QUALIFIED INSTALLER (CONTRACTOR). SELF-INSTALLATION IS PROHIBITED AND WILL INVALIDATE YOUR WARRANTY.**

- Read owner's manual before using/installing.
- Photographs are representative only.
- Check local codes and ordinances for permitted uses.
- Consult installation manual for clearances prior to installation.
- We reserve the right to amend product specifications without notice.
- Installation and servicing recommended by a qualified service person.
- Please read the warranty for any limitations of disclaimers. Combustion chamber carries a 10-year limited warranty. All other parts carry a one-year limited warranty.
- Venting must comply with the "Venting and Chimney Requirements" section of the instruction manual.
- Massachusetts Approval GI-0816-23.

## ACCESSORIES

### THERMOSTAT

Use Cozy thermostat **P322016** or any millivolt thermostat. Current to the thermostat is supplied by the pilot generator.

### BLOWER ACCESSORIES

**MODEL 2901** - 1 00 CFM, shipping weight 9 lbs.

**MODEL 2907** - 125 CFM, shipping weight 9 lbs.

Attaches to top of the Monterey furnaces with ON/OFF switch or automatic operation. Improves circulation of warm air and reduces temperature differences in the room. Optional deluxe blower for increased airflow. Two blowers may be used on 50,000 BTU/hr. units.

### REAR-OUTLET REGISTER - 6901 / 6920

Shipping weight, 10 lbs.

Chain operated damper with register flush on rear wall, adjusts amount of heat delivered through rear register. Motorized rear outlet register for increased airflow also available.

### GAS CONVERSION KITS

Natural gas to Propane or Propane to Natural gas selections available

### OVAL B/W VENT KIT - 9929 / 9930

Contains hold down plate, oval-to-round adapter, spacer plates and two pieces of 2-foot lengths of oval pipe. Shipping weight 9 lbs.

### REPLACEMENT FACE PANEL - 4915

Soft white powder coat face panel

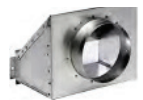
Shipping weight 30 lbs.

### VENT ADAPTER KIT - 9902

Surface-mounted furnace installations only.

### FREE-STANDING KIT - 4901

Allows single sided furnaces to be surface mounted instead of recessed. Ideal for remodeling in existing masonry construction or when studs are substandard. (furnace and face panel not included.) Shipping weight 23 lbs.



**WARNING:** This product can expose you to chemicals including epichlorohydrin which is known to the State of California to cause cancer and birth defects and/or other reproductive harm. For information go to [www.p65warnings.ca.gov](http://www.p65warnings.ca.gov)